

Fosselyngen Runespeak

mai og juni 2025
Volume 50 No. 2



Fosselyngen Lodge No. 5-082, Sons of Norway

PO Box 20957, Milwaukee, WI 53220

FOSELYNGEN LODGE – CALENDAR OF EVENTS

MAY 12 Monday Soc/Cult Meeting at Resurrection Lutheran Church
12400 W. Cold Spring Rd., New Berlin, WI
Socialize at 5:30 p.m. Dinner at 6 p.m. Meeting at about 6:45 p.m.
Celebrating Syttende Mai (Norway's Constitution Day). (See Page 3.)

NO LODGE MEETING IN JUNE

JULY 14 Monday Lodge Picnic at Matty's Bar & Grille in New Berlin, 5PM-8PM
(See Page 9.)

AUGUST 11 Monday Soc/Cult Meeting at Resurrection Lutheran Church
12400 W. Cold Spring Rd., New Berlin, WI
Socialize at 5:30 p.m. Dinner at 6 p.m. Meeting at about 6:45 p.m.
Restauration 200th Anniversary, 1825-2025
Mark Bjorgo will feature the 200th Anniversary of the first organized
Norwegian emigration to North America. (See Page 3.)

Contents of This Issue:

- Pg. 1: Calendar of Events; Table of Contents
- Pg. 2: President's Report; Officers
- Pg. 3: May 12th Lodge Mtg; Restauration Anniversary 1825-2025 Topic of Aug. 11th Mtg.; Loose Ends Project
- Pg. 4: Two Recent Lodge PowerPoint Presentations Now on YouTube; Swedish American H.S.
- Pg. 5: March 10th Program Pics -- Norwegian Bingo; Crossings & Connections: Norwegian Migration to N.A.
- Pg. 6: April 14th Program Pictures -- Sami People of Scandinavia by Linda Reed
- Pg. 7: Livsreise Restauration Ship 200 Year Commemoration
- Pg. 8: Notices; Newsletter Input Deadline June 15
- Pg. 9: July 14th Picnic Details and Reservation Form
- Pg.10: Postal Page; Jokes

Like the modern alphabet, runes were the written symbols of our Norse ancestors. Understood only by the very wise, they were used to communicate with others, as well as with the ancient gods.

FRA PRESIDENTEN

(mai og juni 2025)

President's Message, April 11, 2025

Dear Members,

I hope this newsletter finds you well. We are all looking forward to spring! I'm returning to Wisconsin on May 3rd and look forward to seeing you at the May 12th meeting where we will celebrate Syttende Mai! How about wearing your Bunad? Or Norwegian sweater or Red, White & Blue?

Please register early for our annual summer picnic on Monday, July 14th this year at Matty's Bar and Grille, 14460 W. College Ave., New Berlin. We hope our new location will meet everyone's needs. It is in a new private room, that is air-conditioned, handicapped accessible, has easy parking, great food and drinks, games and best of all we will have fun with other members. **(See page 9 for picnic details and reservation form.)**

As our service project, we have made a commitment to provide bag lunches for "The Gathering" three times this year, on May 23rd, July 25th, and September 12th. We will be looking for 12-15 members to volunteer to help make peanut butter sandwiches and help pack the bags on each date. We meet at 1 p.m. at Resurrection Lutheran Church, and it takes approximately 2 hours to complete. The lunches are delivered the next morning for distribution at Ascension Lutheran Church in Milwaukee. It is a fun and rewarding time. Please join me in making a difference for our community. **The first sign-up sheet for May 23rd will be passed at our April & May meetings.**

Whether you can join us for every meeting or event or only occasionally, your presence always enriches our gatherings. Please feel free to bring friends who might enjoy our lodge.

Fondly,

Sue Roedel

414-526-8312 sjroedel@gmail.com

FOSSELYNGEN OFFICERS

President	Sue Berg Roedel	414-526-8312
Vice-President	*Arlette Johnson	414-368-3324
Treasurer	Gretchen Bjork	262-502-9197
Secretary (Correspondence)	Janice Gregoire	262-784-6953
Secretary (Recording)	Karen Smeiska	414-690-4402

If you have any questions, please call one of the above officers.

***NOTE:** For membership information, call our Vice-President, Arlette Johnson.

MONDAY, MAY 12, 2025
Social/Cultural Meeting
Resurrection Lutheran Church
12400 W. Cold Spring Rd., New Berlin, WI 53151

Socialize at 5:30 p.m.

Dinner at 6 p.m. Menu: meatballs, potato, vegetable and Norwegian cookies

Meeting starts at about 6:45 p.m.

Celebrating Syttende Mai, (17th of May), Norway's Constitution Day.

Program: "Commemorating Syttende Mai - Norwegian Constitution Day".

Our special Syttende Mai program will highlight the history of Norway and Syttende Mai, Norwegian Immigration to the USA, and Norwegian Folk Dancing.

MONDAY, AUGUST 11, 2025
Social/Cultural Meeting
Resurrection Lutheran Church
12400 W. Cold Spring Rd., New Berlin, WI 53151

Socialize at 5:30 p.m.

Dinner at 6 p.m. Menu: TBD

Meeting starts at about 6:45 p.m.

Restauration 200th Anniversary, 1825-2025

Program: Our Aug. 11, 2025 cultural program will feature the 200th Anniversary of the first organized Norwegian emigration to North America that will be celebrated in 2025.

Mark Bjorgo will feature the 200th Anniversary of the first organized Norwegian emigration to North America. On July 4, 1825, a group of 52 Norwegians set sail on the ship Restauration to make the first organized migration from Norway to North America. Who were these people? What caused them to seek a new life?

Loose Ends Project

As mentioned at the April 14, 2025, meeting, "Loose Ends Project" is an organization/movement that will match volunteers with projects left unfinished due to death or disability. Projects may include knitting, crocheting, sewing, quilting, embroidery, and many more. Information can be found on their website, <https://looseends.org/>.

Gretchen Bjork

Please Note: If you receive a notice or call that a member is sick, in a nursing home or has passed away, **call Nancy Sande (414-231-3586) so that the person can be remembered and other officers notified.**

Also, don't forget to **notify Arlette Johnson (414-368-3324) when a member of the Lodge passes away,** since Arlette must notify the Sons of Norway office in Minneapolis. Many people do not purchase a newspaper, and others do not indicate in the obituary that they were a member of Sons of Norway.

SWEDISH AMERICAN HISTORICAL SOCIETY

MAY 17, 2025 MEETING

Our next meeting will be Saturday, May 17, 2025, 1:30 p.m. at Martin Luther Church, 9235 W. Bluemound Rd.

Meeting and program:

"The History of Swedish Sami People".

Presentation by SAHSWI member **Michaela Yukus.**

FIKA (coffee and treats) will follow. More information on the meeting and program will be on our website: <https://sahswi.org> .

MIDSOMMAR IN HEIDELBERG PARK

Sunday, June 22, 2025

1:00-4:00 p.m.

Heidelberg Park, 700 W. Lexington Blvd., Glendale, WI.

More information will be on our website: <https://sahswi.org> .

Two Recent Lodge PowerPoint Presentations Now on YouTube

Member Daryl Wunrow has recently converted two of his recent PowerPoint Presentations to videos on YouTube.com. Anyone with access to streaming and Youtube.com can watch the following titles:

"Olaf Eide: From Stranded Sailor to OSS War Hero"

In 1941, 20-year-old Norwegian deckhand Olav Eide found himself stranded in New York City after his ship sailed without him. With his homeland under German occupation, he made a fateful decision that would lead him into the U.S. Army, the legendary Viking Battalion, and the covert OSS NORSO unit. His bravery and sacrifice earned him Norway's prestigious St. Olav Medal, and in 1987, he met King Olav.

<https://youtu.be/zcHpC6HDabA>

"Leif Erikson Discovered Milwaukee?"

In the 1880s, American sculptor Anne Whitney created a statue of Leif Erikson, inspired by the growing interest in the possibility of Viking presence in North America around the year 1000 AD. This fascination evolved into a passionate movement to recognize Leif Erikson as the first European to set foot on the continent—challenging the prevailing narrative that credited Christopher Columbus. A second casting of Whitney's statue was later installed in Juneau Park, Milwaukee, thanks to the efforts of prominent Nordic-American figures who sought to celebrate Viking heritage. A group of Nordic experts and advocates in Boston and Wisconsin played a key role in funding and promoting the statue. Anne Whitney's Leif Erikson statue was successfully placed in Milwaukee, ensuring the Viking explorer's legacy was honored in the Midwest.

<https://youtu.be/qTC4kBDYY28>

MARCH 10, 2025 PROGRAM

PLAYING NORWEGIAN BINGO



**MARY TAYLOR
CALLING NORWEGIAN
BINGO WORDS**



PRIZES



Crossings and Connections: Norwegian Migration to North America June 18–22, 2025, at St. Olaf College, Northfield, Minn.

This is a conference exploring the causes and effects of Norwegian migration. Geared toward the public and open to all, the gathering will include opportunities to explore Norwegian-American music, dance, film, historic sites, and more. Registration is now open!

For registration information, go to the following:

[Visit the conference webpage for more information >>>](#)

NAHA Looks Back on 100 Years as it Gears up for the Next Century

The Norwegian American Historical Association (NAHA), is Norwegian America's archive. Since its founding 100 years ago, it has grown to be one of North America's oldest and largest collections of ethnic manuscripts. NAHA Executive Director Amy Boxrud talks about its importance for past, present, and future, as NAHA celebrates its 100th birthday and prepares for the Crossings 200 commemoration.

[Read more in The Norwegian American >>>](#)

Note: Lodge member Mark Bjorgo plans to go to this conference. Anyone who is interested can contact Mark for more info @ cell 262-470-0561 or email markbjorgo@yahoo.com

APRIL 14, 2025 PROGRAM
SAMI PEOPLE OF SCANDINAVIA BY LINDA REED
PICTURES OF LINDA & HER SAMI DISPLAYS



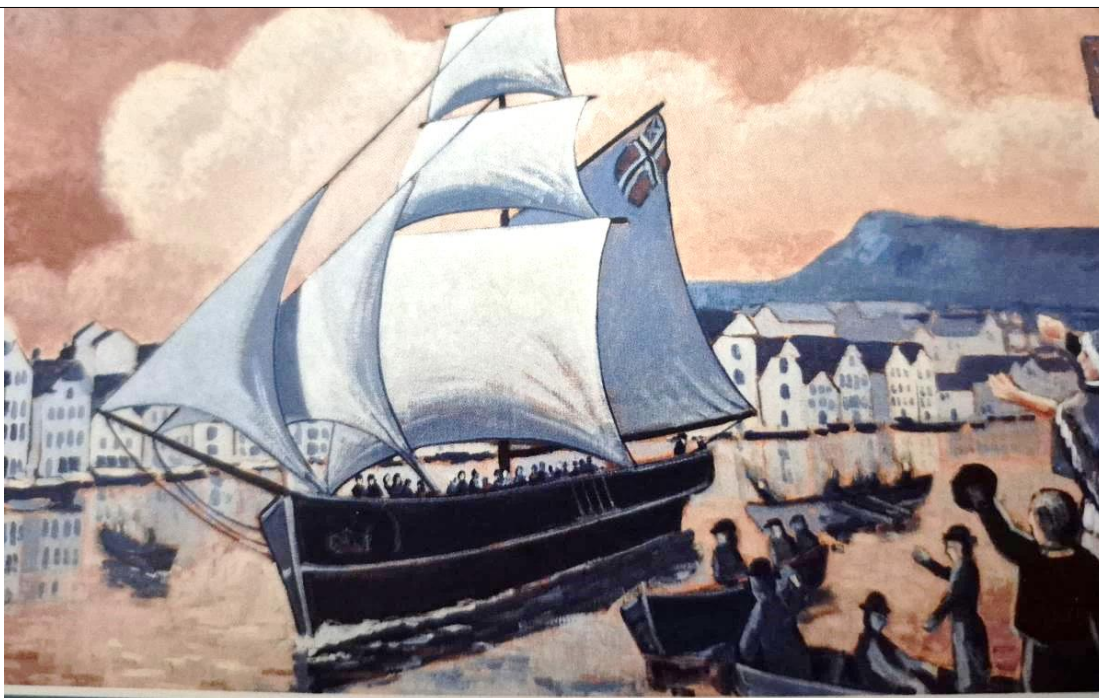


LIVSREISE™

Livsreise is pleased to announce a new exhibit!
"200 Years of Norwegians in America"

Visit our Website:

[Livsreise - Norwegian Heritage Center | Stoughton, WI](https://www.livsreise.org/norwegian-heritage-center)



Sigmund Aarseth Painting of the Sloop Restauration

The ship Restauration set sail for America from Stavanger, Norway on July 4, 1825 with 52 Norwegians aboard. To commemorate this bicentennial, the Vesterheim Museum in Decorah, Iowa has curated a special exhibition focusing on Norwegian immigration. It features twenty objects that tell important stories and themes for Norwegians in America. Themes include living traditions, migration of skills, the Sami, higher education, sports, citizenship, Native Americans and Norwegian Americans, World War I, and returned immigrants. Each theme tells an important story of travel, settlement, family, and friends, old and new. This exhibit is now open and will be at Livsreise through all of 2025.

Plan your visit today!

Livsreise is located in downtown Stoughton, WI – the birth place of the Coffee Break and home to many Norwegian immigrants from the late 1800's to early 1900's.

Livsreise 277 West Main St. Stoughton, WI 53589 US

HOW TO CONTACT FOSSELYNGEN LODGE:

To Phone: Call 414-526-8312

To Send Postal Mail:

Fosselyngen Lodge No. 5-082
Sons of Norway
PO Box 20957
Milwaukee, WI 53220

Fosselyngen Lodge Web Site:

<https://sonsofnorwaymilwaukee.org/index.html>

Fosselyngen Lodge Facebook Site:

<https://facebook.com/fosselyngenlodge>

SPORTS MEDAL PROGRAM

Just a reminder that forms and information about the Sports Medal Program are available. Contact Dennis Dale at 414-771-3470 or by mail at 1527 Alice Street, Wauwatosa, 53213.

GUIDELINES FOR BRINGING GUESTS TO LODGE MEETINGS

Members are encouraged to invite guests to our monthly meetings to learn more about our Lodge. If a guest would also like to join us for dinner prior to the program, they may do so at no cost for one time only. Should they want to come again, they will need to pay \$10.00 for the dinner. As a member you are not charged for any regular meeting meal and also receive a discounted price for the picnic and Christmas party, so please encourage your friends to join to receive these benefits and become a member of the Fosselyngen Family.

*** JOIN US IN SONG ***

Festival City Chorus, Milwaukee's own a cappella chorus, is working diligently to prepare for performances and contests.

We rehearse most Tuesday evenings at Mount Hope Lutheran Church, 8633 W. Becher.

ALL males interested in learning more about us are encouraged to call our hotline: 414-281-SING (7464)

Don Doss, SON Member

Have You Had a Financial Checkup Lately?

If not, contact your field staff representative, Greg Ragan, to set up an appointment to discuss your financial needs at no cost to you. This is a benefit of membership.

Greg Ragan, Sons of Norway
Fraternal Benefits Counselor,
Insurance & Investments
7042 Kinnikinnick Drive
Roscoe, IL 61073
Phone: 815-623-8817 (Office)
Email: gragan51@gmail.com

www.sonsofnorwayblog.blogspot.com

Designed to provide up-to-date commentary or news on issues related to Norway and Sons of Norway.

CHANGE OF POSTAL ADDRESS, PHONE NUMBER, OR EMAIL ADDRESS

If you have a change of any of these items, ***please*** notify the Sons of Norway International Headquarters Membership Department.

Either phone their office at 800-945-8851, or you can log on to the Sons of Norway website <https://www.sofn.com> and view & update your member profile.

Notice: All articles & information for the July/August 2025 newsletter are **due by June 15th**.

Email articles to the editor, John Schneble, csjohn@att.net or mail to: 1024 North 121st Street, Wauwatosa, WI 53226. The editor reserves the right to edit all articles.

You Are Invited to the Fosselyngen Lodge Picnic!



Monday, July 14, 2025, at 5PM-8PM

Location: Matty's Bar & Grille

14460 W. College Ave, New Berlin

Please come, rain or shine, it doesn't matter as we have rented their new private room! Handicap accessible and plenty of parking. Bago game is available in the Big Back Yard! Door prizes! Fun, Fun, Fun!

Cost- \$10.00 per member and \$20.00 guests. (Actual cost is over \$40.00 per person, lodge is subsidizing). Buffet of Hamburgers, Brats, Fixin's Tray, Potato Salad, Baked Beans & Green Salad and Dessert. Soft drinks included and cash bar available.

Please send your check and registration form to Sue Roedel, 14168 W. Honeyager Dr., New Berlin, WI 53151 by June 25th as we need to give a final count to the restaurant. Any questions, please contact Sue 414-526-8312 or email sjroedel@gmail.com .

Name(s)

Phone number



Fosselyngen Lodge No. 5-082
Sons of Norway
PO Box 20957
Milwaukee, WI 53220

Ole might be considered a bit gullible. Last week, he contributed \$5.00 to a collection being taken for the widow of the Unknown Soldier.

Ole went to the hospital to visit Sven who was in intensive care with an oxygen tube in his nose. Ole tried to talk to Sven but all he could get out of him was gasping and unintelligible talk. Finally, Ole impatiently thrust a notepad and pencil at Sven and said, "I can't understand you, Swen. Write it down." So, Sven weakly scribbled on the pad, "Get your dang foot off my oxygen tube!"

Ole got into a lot of trouble recently at the Minneapolis-St. Paul International Airport. He was walking through the terminal when he spotted his old friend, Jack Trygstad. Ole made his big mistake when he shouted across the terminal, "HI, JACK!"

Lena went to the doctor about her memory loss. The doctor made her pay in advance.

Monthly meetings vary. Please see page one for dates, times, and location of meetings..38
Web site: <http://sonsofnorwaymilwaukee.org>

The mission of Sons of Norway is to promote and preserve the heritage and culture of Norway and provide quality insurance and financial products to its members.

Sons of Norways mission er a fremme og ivareta norske kulturtradisjoner, og samtidig tilby de beste forsikrings-og finansprodukter til alle medlemmer.

This information is for official Sons of Norway business use only. Use of this information for solicitation or commercial purposes is a violation of the Sons of Norway privacy policy and is strictly prohibited.

Fosselyngen Runespeak is the official publication of Fosselyngen Lodge 5-082. Fosselyngen Runespeak is published 6 times a year by Fosselyngen Lodge 5-082, Sons of Norway, PO Box 20957, Milwaukee, WI 53220. Annual membership in Fosselyngen Lodge includes subscription to this newsletter.