

# Fosselyngen Runespeak

november og desember 2023  
Volume 48 No. 6



Fosselyngen Lodge No. 5-082, Sons of Norway

PO Box 20957, Milwaukee, WI 53220

## FOSELYNGEN LODGE – CALENDAR OF EVENTS

**NOVEMBER** 17, 18, and 19 International Folk Fair at State Fair Park (See Page 2.)  
Fri., Sat., & Sun.

### **NO LODGE MEETING IN NOVEMBER**

**DECEMBER** 17 Sunday Lodge Christmas Party  
Noon until 3PM at Maggiano's Little Italy Restaurant at Mayfair Mall.  
(See Christmas Party Registration Form on Page 9.)

**JANUARY** 8 Monday Soc/Cult Meeting at Resurrection Lutheran Church (See Page 3.)  
12400 W. Cold Spring Rd., New Berlin, WI  
Socialize at 5:30 PM. Dinner at 6 PM. Meeting at about 6:45 PM.  
(For meeting details and program details, see the January/February 2024 Runespeak.)

### **NO LODGE MEETING IN FEBRUARY**

#### **Contents of This Issue:**

- Pg. 1: Calendar of Events; Table of Contents
- Pg. 2: President's Report; International Folk Fair; Officers
- Pg. 3: Jan. 8<sup>th</sup> Soc/Cult Mtg. at Resurrection Luth.; Norsk Christmas Traditions; Festival of Trees Grinchmas
- Pg. 4: 2024 Lodge Officers & Meeting Schedule; Jarlsberg Cheese Dip; Welcome; St. Olaf's Lutefisk
- Pg. 5: Mike Palacek's Ingar Olsen Presentation; Sympathy; Wreath Placement on Leif Erikson Statue
- Pg. 6: Olav Eide Awarded St. Olav Medal; Norwegian Christmas Links for Stories, Traditions, & Preparations
- Pg. 7: We are Looking for New Heritage Members.
- Pg. 8: Notices; Mail Staff; Newsletter Input Deadline December 15<sup>th</sup>
- Pg. 9: Christmas Party Registration Form
- Pg. 10: Postal Page

Like the modern alphabet, runes were the written symbols of our Norse ancestors. Understood only by the very wise, they were used to communicate with others, as well as with the ancient gods.

## **FRA PRESIDENTEN**

(november og desember 2023)

Happy Fall Y'all! It's a beautiful time of year watching the trees turn color.

As most of you know, we tried out a new location for our lodge meetings for the last three months. Our active members have voted unanimously to continue meeting at Resurrection Lutheran Church in New Berlin going forward. It is a cheerful first floor room with convenient parking. If you haven't attended, please plan to do so starting in January.

Our September meeting was "The Cheese Story" (Gjetost/Primost and Jarlsberg). Several members have asked me to post the recipe for a delicious cheese dip (which I brought to the October meeting to sample). The recipe is included in this issue on Page 4.

We had a group of 10 members gather at the Leif Erickson statue on October 7<sup>th</sup> in Juneau Park. Mange Takk to Milt and Nancy Sande for once again ordering and delivering the beautiful wreath and the members who took time to attend. What a wonderful tradition! (See pictures on Page 5.)

Elections for the 2024-25 term were held at our October meeting, and the officers are listed in this issue on Page 4. Thanks to all the Officers and others who volunteer to keep our lodge moving forward.

October is SON Foundation month. Did you know that SON Foundation distributed over \$218,000 in awards, \$133,000 in scholarships, \$75,895 in grants for Norwegian culture and heritage programs, and \$9,296 in camperships for kids to attend Norwegian cultural camps? Additional information on the foundation can be found on the website ( <https://www.sofn.com/foundation/> ). Please consider a donation to this worthy cause.

Our next meeting and installation of Officers is our Christmas Party on December 17<sup>th</sup> at Maggiano's. Please see the article on Page 9 and send in your reservation as soon as possible. I look forward to seeing you there.

Fraternally yours,  
Sue Berg Roedel

414-526-8312      [sjroedel@gmail.com](mailto:sjroedel@gmail.com)

### **International Folk Fair Nov. 17-19 - 80<sup>th</sup> Anniversary at the State Fair Expo Hall**

This year our Lodge is joining with four other Nordic groups with a combined exhibit called "Nordic Countries". Each Nordic country member in the Nordic Council will feature a large colorful banner showing cultural scenes along with many display items. Last year we were the only Nordic country at the Folk Fair. This combined effort is a first time effort for all Nordic Countries to collaborate and show the public our unique similarities and differences. We encourage our members to attend the 80<sup>th</sup> Folk Fair and promote our Nordic heritage.

### **FOSSELYNGEN OFFICERS**

President	Sue Berg Roedel	414-526-8312
Vice-President	*Arlette Johnson	414-368-3324
Treasurer	Gretchen Bjork	262-502-9197
Secretary (Correspondence)	Janice Gregoire	262-784-6953
Secretary (Recording)	Maureen Welli	414-774-0507

If you have any questions, please call one of the above officers.

**\*NOTE:** For membership information, call our Vice-President, Arlette Johnson.

**MONDAY, JANUARY 8<sup>TH</sup>, 2024**  
**Social/Cultural Meeting**  
**Resurrection Lutheran Church**  
**12400 W. Cold Spring Rd., New Berlin, WI 53151**

Socialize at 5:30 PM.

Dinner at 6 PM.

Meeting starts at about 6:45 PM.

For meeting details and program details, see the January/February 2024 Runespeak.

**SHARE ONE OR MORE NORWEGIAN CHRISTMAS TRADITIONS YOU STILL CELEBRATE.**

(Bring your family customs to our December Christmas party, and we'll all share together)

Norwegian Food \_\_\_\_\_

Norwegian Customs \_\_\_\_\_

If you can't come to our annual Christmas Party, share your family Norwegian Christmas customs. Send an email or mail to Daryl Wunrow – [dmwunrow@gmail.com](mailto:dmwunrow@gmail.com) or mail to 12455 W. Janesville Rd., Unit 411, Muskego, WI 53150.

**Fesztival of Trees Grinchmas**

Fosselyngen Lodge will be participating in the Tripoli Shriners 6<sup>th</sup> Annual Fesztival of Trees event being held at the Tripoli Shrine Center, 3000 West Wisconsin Avenue, Milwaukee, from Saturday, November 18 through Saturday, November 25, 2023 (CLOSED ON NOVEMBER 23 - THANKSGIVING DAY).

This family fun event is open to the public and tickets are available at the door - admission is \$5.00 for adults, and children under 12 are free. Each year, various companies and organizations donate a decorated tree, and attendees can purchase raffle tickets for a chance to win one of the trees.

This is our third year participating in this event, and the tree we are donating will be decorated in the Grinchmas theme, with a little Norwegian twist.

See the Shriners website [www.tripolishrine.com/feztival-of-trees](http://www.tripolishrine.com/feztival-of-trees) for more information, hours and videos from previous years.

Arlette Johnson and Gretchen Bjork



**Lodge Officers Elected  
At the 2023 Election on October 9<sup>th</sup>  
Social/Cultural Meeting**

All Lodge Officer terms are 2 years unless  
noted otherwise.

**Fosselyngen No. 82 Officers 2024-25**

President	Susan Berg Roedel
Vice President	Arlette Johnson
Treasurer	Gretchen Bjork
Secretary- Corresponding	Jan Gregoire
Secretary- Recording	Karen Smeiska
Counselor	Milt Sande
Cultural/Social Director	Daryl Wunrow
Marshall	Steve Welli
Greeters	Dave Christianson
Greeters	Randy LeBeck
Sports Director	Dennis Dale
Musician	Helen Dale
Editor	John Schneble
Historian	Daryl Wunrow
Trustee, 2024	Sheila Kershek
Trustee, 2024,25	Jack Lofte
Trustee, 2024,25,26	Dave Christianson
Foundation	Bonnie Wunrow
Auditors	Gary Christianson
Auditors	Glendean Schmidt

**Jarlsberg Cheese Dip Recipe**

16 oz Jarlsberg cheese (shredded)

¾ cup Mayonnaise

2 T red onion (diced)

Salt to taste.

Combine and serve! Enjoy!



**WELCOME NEW MEMBER**

Curtis John Akre

**Tentative 2024 Meeting Schedule**

Fosselyngen Lodge - Resurrection Lutheran  
Church (unless otherwise stated)

Monday evenings: 5:30 Social, 6:00 Dinner,  
program following approximately 6:45PM

January 8<sup>th</sup>

March 11<sup>th</sup>

April 8<sup>th</sup>

May 13<sup>th</sup>

July 8<sup>th</sup>, Picnic place TBD

August 12<sup>th</sup>

September 9<sup>th</sup>

October 14<sup>th</sup>

December – Christmas party, date and place TBD

**St. Olaf's Annual  
Lutefisk Dinner, Bake Sale and Butik  
(Including delicious Swedish meatballs)**

**Saturday**

**December 2, 2023**

**Serving from 11:00 a.m. to 4:00 p.m.**

St. Olaf has been serving Lutefisk with all the trimmings  
(Including Norwegian cookies) for more than 70 years.

Come check out our Butik for interesting,  
fun, and unique items (gifts, decor and clothing).

**Adults: \$20.00**

**Children 5-10: \$8.00**

**Under 5: Free**

**“TO GO” ORDERS AVAILABLE  
ADD \$2.00 PER DINNER**

St. Olaf Lutheran Church

W653 Roosevelt Road

Located East of Alderly

Dodge County, Town of Ashippun

**\*\*\*RESERVATIONS PREFERRED AND MAY BE MADE  
BY VISITING [www.st-olaf.org](http://www.st-olaf.org)  
FOR ON-LINE TICKET SALES AND OTHER  
INFORMATION**

**\*\*\*RESERVATIONS ALSO AVAILABLE BY CALLING  
ELAINE MONIS AT (414) 840-4629**

**\*\*\*Tickets also sold at the door (Visa, Mastercard,  
Check, or Cash accepted)**

Everyone is welcome to attend St. Olaf's  
Saturday 5 p.m. worship service





At the October 9<sup>th</sup> lodge meeting, we were fascinated by the presentation by Mike Palacek of the Racine Lodge about the many heroic water rescues made by Captain Ingar Olsen of the US Coast Guard.

## Sympathy

Fosselyngen Lodge extends its sympathy to Milt Sande and family in the loss of his brother Allen Sande on September 23<sup>rd</sup>.



**Please Note:** If you receive a notice or call that a member is sick, in a nursing home or has passed away, **call Nancy Sande (414-231-3586) or Ellie Thoresen (262-953-2871) so that the person can be remembered and other officers notified.**

Also, don't forget to **notify Arlette Johnson (414-368-3324) when a member of the Lodge passes away,** since Arlette must notify the Sons of Norway office in Minneapolis. Many people do not purchase a newspaper, and others do not indicate in the obituary that they were a member of Sons of Norway.

### WREATH PLACED ON LEIF ERIKSON STATUE IN JUNEAU PARK IN MILWAUKEE ON SATURDAY, OCT. 7<sup>TH</sup>, 2023



MILT & NANCY SANDE PLACE THE WREATH



L-R - JACK LOFTE, PHIL REYKDAL, SUE BERG, DARYL WUNROW, BONNIE WUNROW, JUDITH DIMMICK, JOHN DIMMICK, NANCY SANDE, AND MILT SANDE



**OLAV EIDE WAS AWARDED THE ST. OLAV MEDAL  
AT THE NORWEGIAN CONSULATE IN CHICAGO IN 1977.**



From L to R: Jan Eide, Clayton Trungaurd, Erik Eide. Norwegian consular official, John Woppert, Olav Eide, Laura Eide, Edith Trungaurd, Svere Thoresen, Ellie Thoresen, and Gloria Eide at Norwegian Consulate in Chicago, IL. (Note Svere and Ellie Thoreson in the picture.)

Olav Eide served with the OSS where he parachuted behind enemy lines in France in 1944 and Norway in 1945. He was an active leader in Sons of Norway at local, district and international levels.

*(By Daryl Wunrow)*

## **Christmas in Norway**

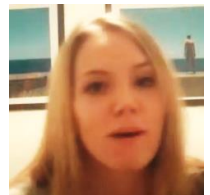


### Norwegian Christmas Links for Stories, Traditions, and Preparations

*(Submitted by Lodge Member Daryl Wunrow)*

#### Here are three Norwegian Christmas links for your holidays:

- **Round the Yule-Log: Christmas in Norway** *(story written by Peter Christen Asbjornsen, Translated by H. L. BRØCKSTAD in 1895).*  
<https://americanliterature.com/author/peter-christen-asbjornsen/short-story/round-the-yule-log-christmas-in-norway>
- **Christmas in Norway – customs and traditions**  
<https://www.whychristmas.com/cultures/norway>
- **Norwegian Teacher Karin** tells about her Norwegian preparations, speaking normally in Norwegian with English subtitles and then slowly so viewers can follow more easily.  
<https://www.youtube.com/watch?v=ympVbKY4CAM>



## **We are looking for new Heritage members**

There are lots of people who could and should be members of your lodge. Who, you ask? You already know them! They are your relatives from age 0 - 15. Surely, you have children, grandchildren (and greats), nieces and nephews (and greats) cousins, and even step relatives!

They all can be members of your lodge as Heritage Members under YOUR membership! They don't have to live with you to be Heritage members. How much does it cost? Nothing. For free. How to you get them on your roster? Quite easy, peasy!

If you use a paper application form, the Heritage Members are added in Option 2 on the form. There is room to add 4 children all at the same time! If you have more, just photocopy the form and include the additional children with the original. The paper form can be printed off the [www.sofn.com](http://www.sofn.com) website. Headquarters will no longer print and distribute the paper form.

There is also a special Heritage Application form. That has to be printed from the [www.sofn.com](http://www.sofn.com) website. It does the same thing.

The easiest way to add the Heritage children is online. If you don't know how to do that, find someone who can help you.

First, out of courtesy, get permission from the child's parent/guardian to add them to the membership as a Heritage Member. Tell the child what you are doing, and follow up with more information about why you want them in the lodge. Tell them about the sports program and awards they can work for; the cultural programs where they can learn crafts and cooking, etc. Tell them how to access and use the programs, and let the parent/guardian know what you are doing. Better yet, sit down with the child and show him/her about Sons of Norway and what is in it for them. Sometimes, this involvement may spark the interest of the parent/guardian, and they might also want to join Sons of Norway!

Why add these relatives to the lodge membership? Who better to tell them the amazing history and heritage in their ancestry than you and Sons of Norway? They can get engaged in projects and learning. Invite these children to attend a meeting with you or go on a special day trip with your lodge.

Again, you ask, why? Almost everyone eventually yearns to find out where and who they came from. Why not help these children now with that journey? Remember, there is no cost to the child or to you.

What you need to sign up a Heritage Member:

Name, address, date of birth, phone and e-mail of child (or parent/guardian), and that's it! Including the phone and e-mail allows any lodge correspondence to be sent to that Heritage Member and keeps them feeling connected to the lodge.

Another reason we should get these Heritage members on board is that many lodges are consisting of mostly elderly folk. Without the infusion and enthusiasm of bringing in young people, our lodges can face difficulties remaining alive. We also need more new members in the 16 and up age groups. Any time we can sign up a new enthusiastic member is a win for your lodge.

So, what are you waiting for? Let's get those Heritage members signed up!

Wendy K Winkelman, LaVonne Wier, Scott Wegner, Tom Boudreau  
District 5 Membership Committee

Check us out at:

<http://www.sofn.com>

<http://sonsofnorway5.com>

<http://twitter.com/sonsofnorway>

<http://sonsofnorwayblog.blogspot.com>

### HOW TO CONTACT FOSSELYNGEN LODGE:

**To Phone:** Call 414-526-8312

**To Send Postal Mail:**

Fosselyngen Lodge No. 5-082  
Sons of Norway  
PO Box 20957  
Milwaukee, WI 53220

Fosselyngen Lodge Web Site:

<https://sonsofnorwaymilwaukee.org/index.html>

Fosselyngen Lodge Facebook Site:

<https://facebook.com/fosselyngenlodge>

### SPORTS MEDAL PROGRAM

Just a reminder that forms and information about the Sports Medal Program are available. Contact Dennis Dale at 414-771-3470 or by mail at 1527 Alice Street, Wauwatosa, 53213.

### CHANGE OF POSTAL ADDRESS, PHONE NUMBER, OR EMAIL ADDRESS

If you have a change of any of these items, *please* notify the Sons of Norway International Headquarters Membership Department.

Either phone their office at 800-945-8851, or you can log on to the Sons of Norway website (<https://www.sofn.com>) and view & update your member profile.

### GUIDELINES FOR BRINGING GUESTS TO LODGE MEETINGS

Members are encouraged to invite guests to our monthly meetings to learn more about our Lodge. If a guest would also like to join us for dinner prior to the program, they may do so at no cost for one time only. Should they want to come again, they will need to pay \$10.00 for the dinner. As a member you are not charged for any regular meeting meal and also receive a discounted price for the picnic and Christmas party, so please encourage your friends to join to receive these benefits and become a member of the Fosselyngen Family.

### \*\*\* JOIN US IN SONG \*\*\*

Festival City Chorus, Milwaukee's own a cappella chorus, is working diligently to prepare for performances and contests.

We rehearse most Tuesday evenings at Mount Hope Lutheran Church, 8633 W. Becher.

ALL males interested in learning more about us are encouraged to call our hotline: 414-281-SING (7464)

Don Doss, SON Member

### Have You Had a Financial Checkup Lately?

If not, contact your field staff representative, Greg Ragan, to set up an appointment to discuss your financial needs at no cost to you. This is a benefit of membership.

Greg Ragan, Sons of Norway  
Fraternal Benefits Counselor,  
Insurance & Investments

7042 Kinnikinnick Drive  
Roscoe, IL 61073

Phone: 815-623-8817 (Office)

Email: [gragan51@gmail.com](mailto:gragan51@gmail.com)

[www.sonsofnorwayblog.blogspot.com](http://www.sonsofnorwayblog.blogspot.com)

Designed to provide up-to-date commentary or news on issues related to Norway and Sons of Norway.

### 2023 VOLUNTEER HOUR SHEETS

Please remember to have your filled out **2023** Volunteer Hour Sheet ready to give to Jan Gregoire during January 2024 so that she can give totals to S of N Headquarters by February 15<sup>th</sup>.

The 2023 Volunteer Hour Sheet was distributed to you with the January/February 2023 *Runespeak*.

If you did not receive it, or if you misplaced your copy of the 2023 Volunteer Hour Sheet, please request another copy of it from John Schneble by phone at 414-771-4176, or email [cslijohn@att.net](mailto:cslijohn@att.net)

**Notice:** All articles & information for the January/February 2024 newsletter are **due by December 15<sup>th</sup>**.

Email articles to the editor, John Schneble, [cslijohn@att.net](mailto:cslijohn@att.net) or mail to: 1024 North 121<sup>st</sup> Street, Wauwatosa, WI 53226. The editor reserves the right to edit all articles.



## Christmas Party Registration Form



Sunday, December 17, 2023

Maggiano's Little Italian Restaurant  
Mayfair Mall – 2500 North Mayfair Road  
Wauwatosa, WI. 53226

Noon - social hour and cocktails / Sit-down Lunch will be served promptly at 1:00 PM, followed by Julenisse visit.

Members: \$15.00 / Guests: Adult - \$25.00 / Children (ages 5-11) \$10.00 (under 5 is free)

Lunch will be served family style and will include the following:

First Course: Mozzarella Marinara, Stuffed Mushrooms, and Chopped Salad

Second Course: Mom's Meat Lasagna, Marinara; Chicken Parmesan; Oven-Roasted Pork Loin in Balsamic Cream Sauce; and Garlic Mashed Potatoes

Desserts: Chocolate Layer Cake and Apple Crostada

-meal also includes rolls, coffee, hot tea, iced tea and assorted sodas.

------(cut here)-----

Name \_\_\_\_\_

Address \_\_\_\_\_

Phone \_\_\_\_\_

Guest(s) Name(s) \_\_\_\_\_

If bringing children, please include their ages.

Make check payable to: **Fosselyngen No. 82, Sons of Norway, and must be received by Thursday, December 7.** As space is limited, the first 50 paid reservations will be guaranteed a seat. We will make every effort to accommodate additional attendees. Thank you!

**Mail reservation form with check to:**

Gretchen Bjork  
W149 N8235 Norman Drive  
Menomonee Falls, WI 53051-3832

Any questions, please call Gretchen at 262-502-9197. Tusen Takk.



Fosselyngen Lodge No. 5-082  
Sons of Norway  
PO Box 20957  
Milwaukee, WI 53220

\*\*\*\*\*  
The traffic cop stopped Sven and he said, "I'm afraid your wife fell out a couple of miles back."  
"Vell, tank goodness," said Sven. "I tot I vas going deaf!!!"

-----  
Did you hear about the Norwegian S.S.T.? Worked real well on run-up, taxied down the airstrip in Oslo, gained speed, and was just about to take off when it ran out of coal.

-----  
Sven says to Ole, "I found dis pen, is it yours?"  
Ole replies, "Don't know, give it here." He then tries it and says, "Ya, it is."  
Sven asks, "How do you know?"  
Ole replies, "Dat's my handwriting!"

-----  
The Internal Revenue Service auditor was checking up on Ole: "We have a question about your tax return, Mr. Olson." "Like vat?" asked Ole. "Well, let's begin with the part where you claim depreciation on your wife...."

Monthly meetings vary. Please see page one for dates, times, and location of meetings. Web site: <a href="http://sonsofnorwaymilwaukee.org">http://sonsofnorwaymilwaukee.org</a>
---

The mission of Sons of Norway is to promote and preserve the heritage and culture of Norway and provide quality insurance and financial products to its members.
--

Sons of Norways mission er a fremme og ivareta norske kulturtradisjoner, og samtidig tilby de beste forsikrings-og finansprodukter til alle medlemmer.
--

This information is for official Sons of Norway business use only. Use of this information for solicitation or commercial purposes is a violation of the Sons of Norway privacy policy and is strictly prohibited.
--

Fosselyngen Runespeak is the official publication of Fosselyngen Lodge 5-082. Fosselyngen Runespeak is published 6 times a year by Fosselyngen Lodge 5-082, Sons of Norway, PO Box 20957, Milwaukee, WI 53220. Annual membership in Fosselyngen Lodge includes subscription to this newsletter.
---